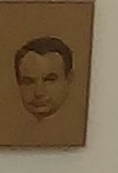
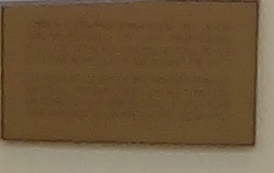
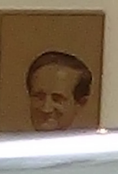
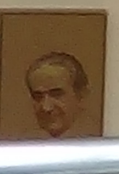
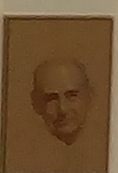
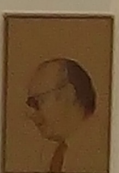
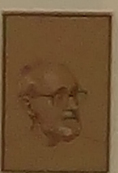
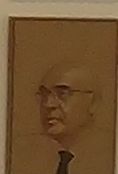
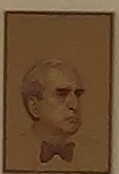
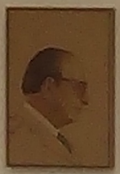
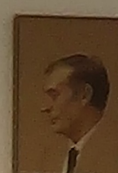
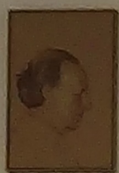
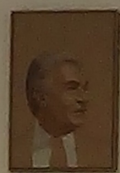




A photograph of a stone wall with the word "SENADO" carved into it. The wall is made of large, rectangular stone blocks. In the background, there are several tall, cylindrical columns and a utility pole. The scene is outdoors, and the lighting suggests it might be late afternoon or early morning.

SENADO







CONSTITUCION ESPAÑOLA de 1812  
con firma de Alcalá Zamora.  
Julian Dostalo, Miguel Asala.

Epistola  
et Roma ad



